

Data tables: September 2012

Published October 2012

Introduction

The functions of the Aboriginal and Torres Strait Islander Health Practice Board of Australia include:

- registering the Aboriginal and Torres Strait Islander practitioners and students
- developing standards, codes and guidelines for the Aboriginal and Torres Strait Islander health practice profession
- handling notifications, complaints, investigations and disciplinary hearings
- approving accreditation standards and accredited courses of study.

The Board's functions are supported by Australian Health Practitioner Regulation Agency (AHPRA). For information about legislation governing our operations see AHPRA's Legislation & Publications at www.ahpra.gov.au/Legislation-and-Publications.aspx

The Board has analysed its registration data and produced a number of statistical breakdowns about registrants to share with the profession and community. The Board shares these breakdowns regularly.

For more information on Aboriginal and Torres Strait Islander Health Practitioners registration, please see the Board's website: www.atsihealthpracticeboard.gov.au/Registration.aspx

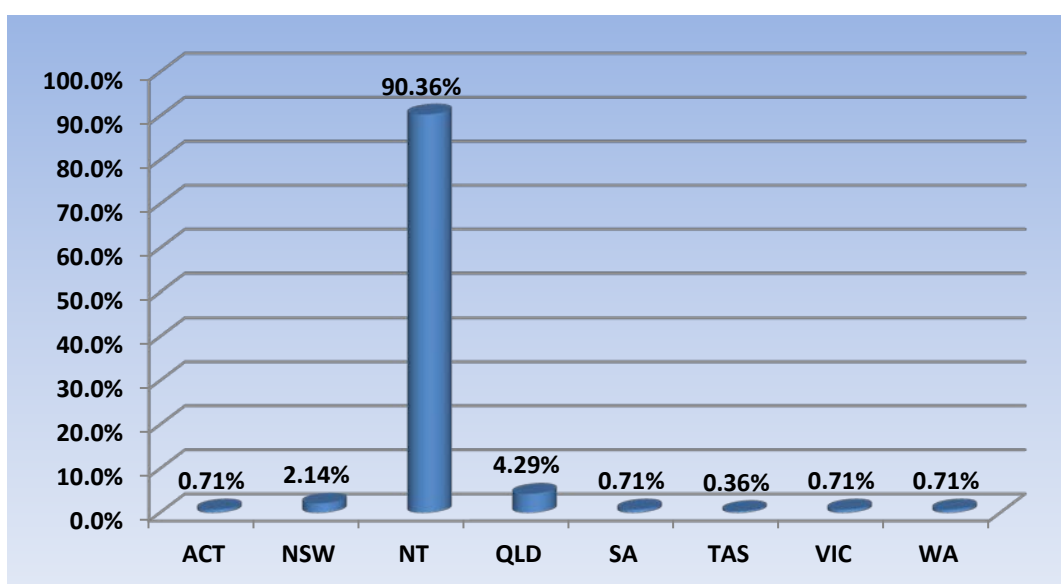
Index of Tables

Aboriginal and Torres Strait Islander Health Practitioners: State and Territory by Registration Type 2	
% By State and Territory	2
Aboriginal and Torres Strait Islander Health Practitioners: Age by Registration Type	3
% By Age	3
Aboriginal and Torres Strait Islander Health Practitioners: Gender by State and Territory by Registration Type	4

Aboriginal and Torres Strait Islander Health Practitioners: State and Territory by Registration Type

State	General	Total	% By State
ACT	2	2	0.71%
NSW	6	6	2.14%
NT	253	253	90.36%
QLD	12	12	4.29%
SA	2	2	0.71%
TAS	1	1	0.36%
VIC	2	2	0.71%
WA	2	2	0.71%
Total	280	280	

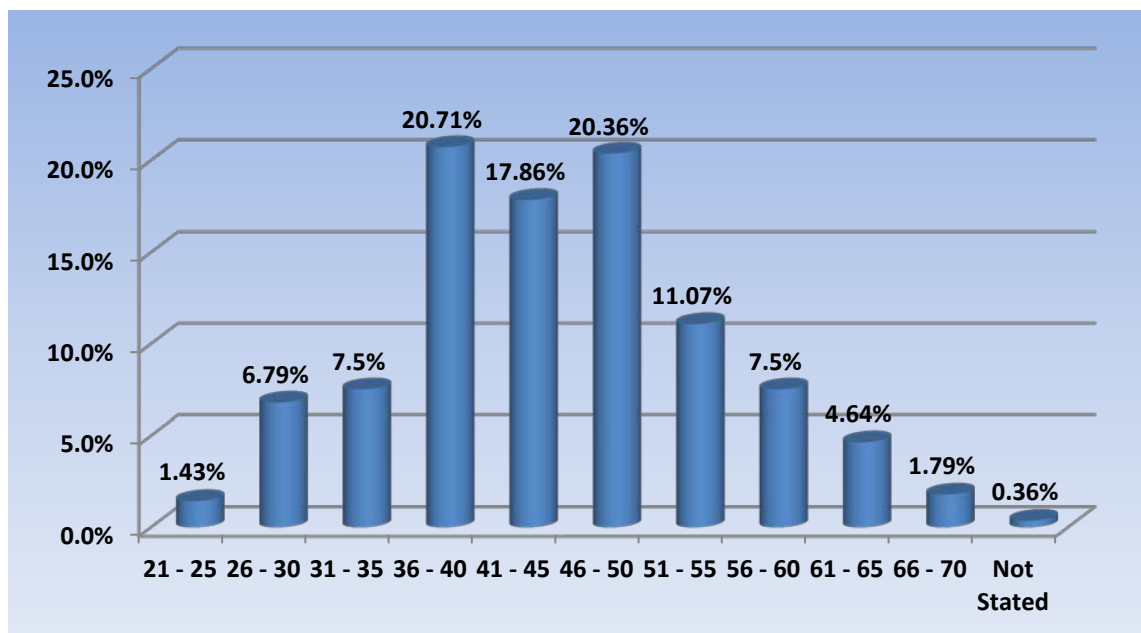
% By State and Territory



Aboriginal and Torres Strait Islander Health Practitioners: Age by Registration Type

Age Group	General	Total	% By Age Group
21 - 25	4	4	1.43%
26 - 30	19	19	6.79%
31 - 35	21	21	7.5%
36 - 40	58	58	20.71%
41 - 45	50	50	17.86%
46 - 50	57	57	20.36%
51 - 55	31	31	11.07%
56 - 60	21	21	7.5%
61 - 65	13	13	4.64%
66 - 70	5	5	1.79%
Not Stated	1	1	0.36%
Total	280	280	

% By Age



Aboriginal and Torres Strait Islander Health Practitioners: Gender by State and Territory by Registration Type

Sex	State	General	Total Count	% By Sex By State
Female	ACT	1	1	0.36%
	NSW	5	5	1.79%
	NT	185	185	66.07%
	QLD	9	9	3.21%
	SA	1	1	0.36%
	TAS	1	1	0.36%
	VIC	2	2	0.71%
	WA	2	2	0.71%
	Sub total		206	206
Male	ACT	1	1	0.36%
	NSW	1	1	0.36%
	NT	68	68	24.29%
	QLD	3	3	1.07%
	SA	1	1	0.36%
	Sub total		74	74
Total		280	280	